



# VERSALIFT

## VTL-135-F

### Van mounted telescopic platform



1 kV certified low voltage insulation



LMC controls with variable outreach



Emergency lowering controls at the pedestal



Turret tailswing within the mirrors



No outriggers for quick setup & packing



# VERSALIFT

A **TIME** MANUFACTURING COMPANY

# VTL-39-135-F on Ford e-Transit



Fully electrical van with plenty of storage room.

No outriggers provides fast and easy setup.

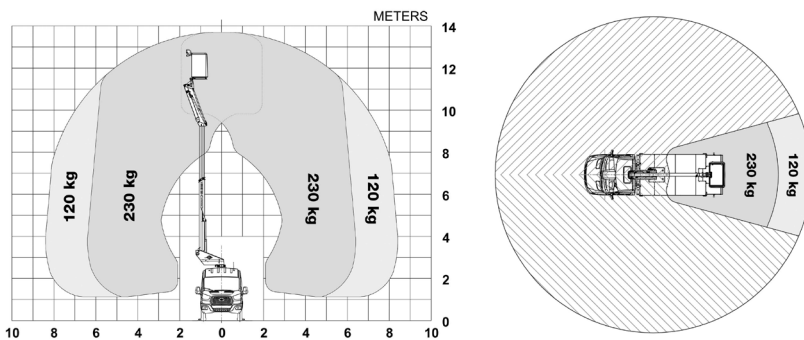
e-Tech 20c Lithium powerpack.

One single charging point for both van and powerpack.

■ Length: 6765 mm ■ Height: 3400 mm ■ Wheelbase: 3300 mm



## Diagramme(s)



## Options

Parallelogram entrance for the bucket  
LED ceiling lights in the van



The shaped profile ultra high strength steel booms provide improved rigidity, stiffness and performance



1 kV insulation



Easy access to the charging socket located at the front



Lithium-Ion power pack (optional)

## Notes

Technical information is subject to change without prior notice. Images may show optional equipment. Installations and/or options may not be available in your specific region.

\* Depending on the vehicle.

\*\* Max payload with a driver, a passenger and a full tank of fuel (220 kg added to the installation weight).

\*\*\* Depending on the vehicle position

## Distributor

**Versalift International**  
Soendervang 3, 9640 Farsøe  
Denmark

+45 9863 2433  
sales@versalift.dk  
versaliftinternational.com